

**Finance and Risk Management Directorate**  
Finance and Risk Management Director  
Ony Suprihartono

- Legal, Governance, Risk & Compliance**  
Legal, Governance, Risk & Compliance Group Head  
Andika Lukmana
- Human Capital**  
Human Capital Group Head  
Sunardi Prionomurti
- Finance**  
Finance Group Head  
\*\*Farid Nugraha

**Manufacturing Directorate**  
Manufacturing Director  
Soni Asrul Sani

- Narogong Plant**  
Narogong Plant General Manager  
Muhamad Istifaul Amin
- Cilacap Plant**  
Cilacap Plant General Manager  
Mochamad Anwar Bakti
- Lhoknga Plant**  
Lhoknga Plant General Manager  
R. Adi Santosa
- Tuban Plant**  
Tuban Plant General Manager  
Priyatno
- Alternative Fuel & Raw Material (AFR)**  
AFR Division Manager  
Budi Yuliadi Nugraha
- Corporate Manufacturing Optimization**  
Corporate Manufacturing Optimization Division Manager  
Fajar Dwi Kusnoaji
- Performance Management & EVE**  
Performance Management & EVE Area Head  
Gammalia Permata Devi
- Corporate Project Management & Engineering**  
Corporate Project Management & Engineering Division Manager  
\*Jatmiko Kurniawan
- Corporate Environment & Sustainability**  
Corporate Environment & Sustainability Manager  
Oepoyo Prakoso
- Corporate Quality Assurance (QA)**  
Head of Corporate QA  
Kun Syukronie
- Management & Operation Support**  
Management & Operation Support Manager  
Bisrul Hasibuan
- Talavera Project Jetty Construction**  
Talavera Project Jetty Construction  
\*\*Danu Prijambodo

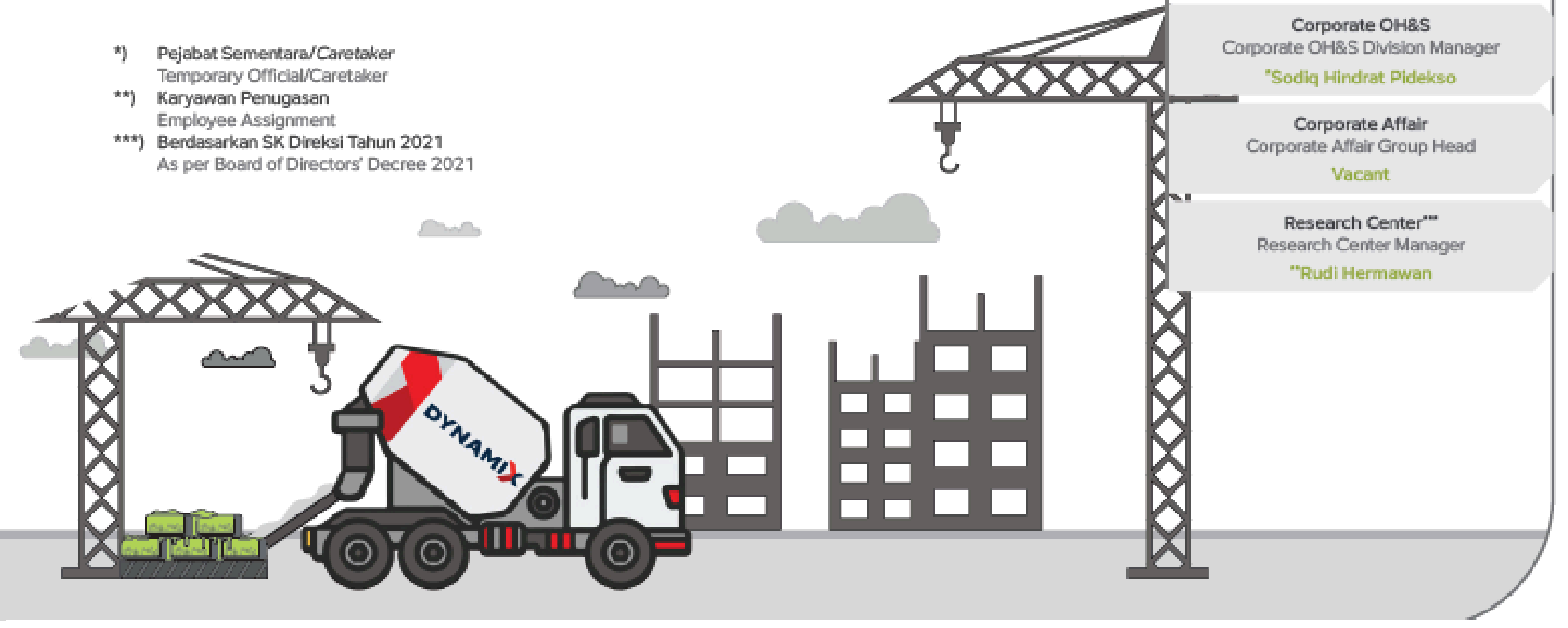
**Offtake & Partnership Directorate**  
Offtake & Partnership Director  
Yasuhide Abe

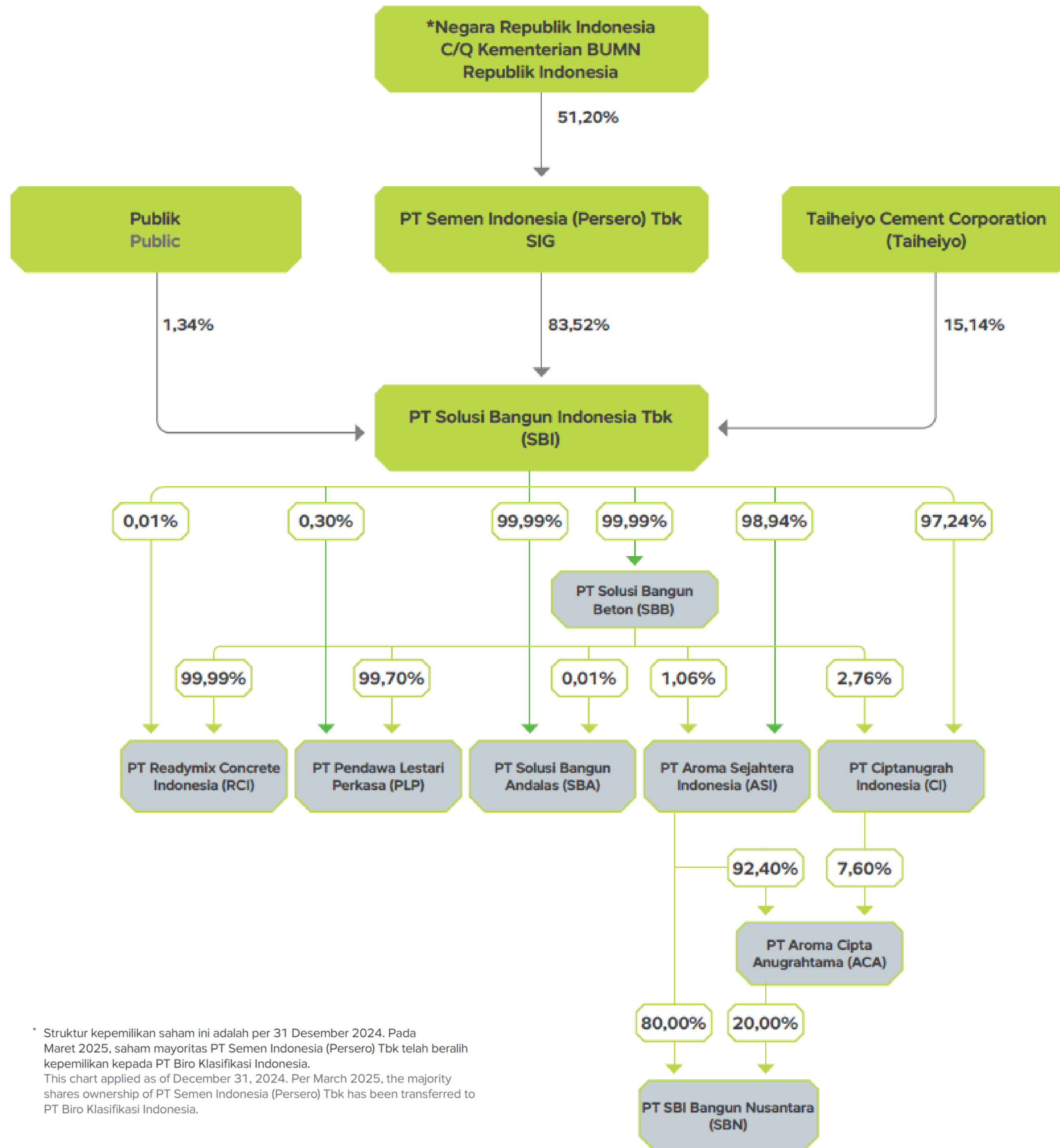
- Partnership & Taiheiyo Relation**  
Partnership & Taiheiyo Relation Manager  
Irma Oktarlina

**President Directorate**

- Aggregates & Construction Material**  
Aggregates & Construction Material Group Head  
Giri Prabowo
- Supply Chain**  
Supply Chain Group Head  
Poernawan Arief Widagdo
- Procurement**  
Procurement Group Head  
Joko Harsono
- Internal Audit**  
Internal Audit Division Manager  
Subagio Tjahjono
- Office of the CEO**  
Office of the CEO Manager  
Boedy Darmawan
- Corporate Asset Management & Strategic Project**  
Corp. Asset Management & Strategic Project Manager  
\*Budi Setiawan
- Corporate OH&S**  
Corporate OH&S Division Manager  
\*Sodiq Hindrat Pidekso
- Corporate Affair**  
Corporate Affair Group Head  
Vacant
- Research Center\*\***  
Research Center Manager  
\*\*Rudi Hermawan

\*) Pejabat Sementara/Caretaker  
Temporary Official/Caretaker  
\*\*) Karyawan Penugasan  
Employee Assignment  
\*\*\*) Berdasarkan SK Direksi Tahun 2021  
As per Board of Directors' Decree 2021





\* Struktur kepemilikan saham ini adalah per 31 Desember 2024. Pada Maret 2025, saham mayoritas PT Semen Indonesia (Persero) Tbk telah beralih kepemilikan kepada PT Biro Klasifikasi Indonesia. This chart applied as of December 31, 2024. Per March 2025, the majority shares ownership of PT Semen Indonesia (Persero) Tbk has been transferred to PT Biro Klasifikasi Indonesia.